

[œ Ø](#) [Æ Æ 5 a](#) [Æ á•](#) [Æ @ â ± □](#) [Æ • â / ¶ â](#) [Æ \\$ î z](#)

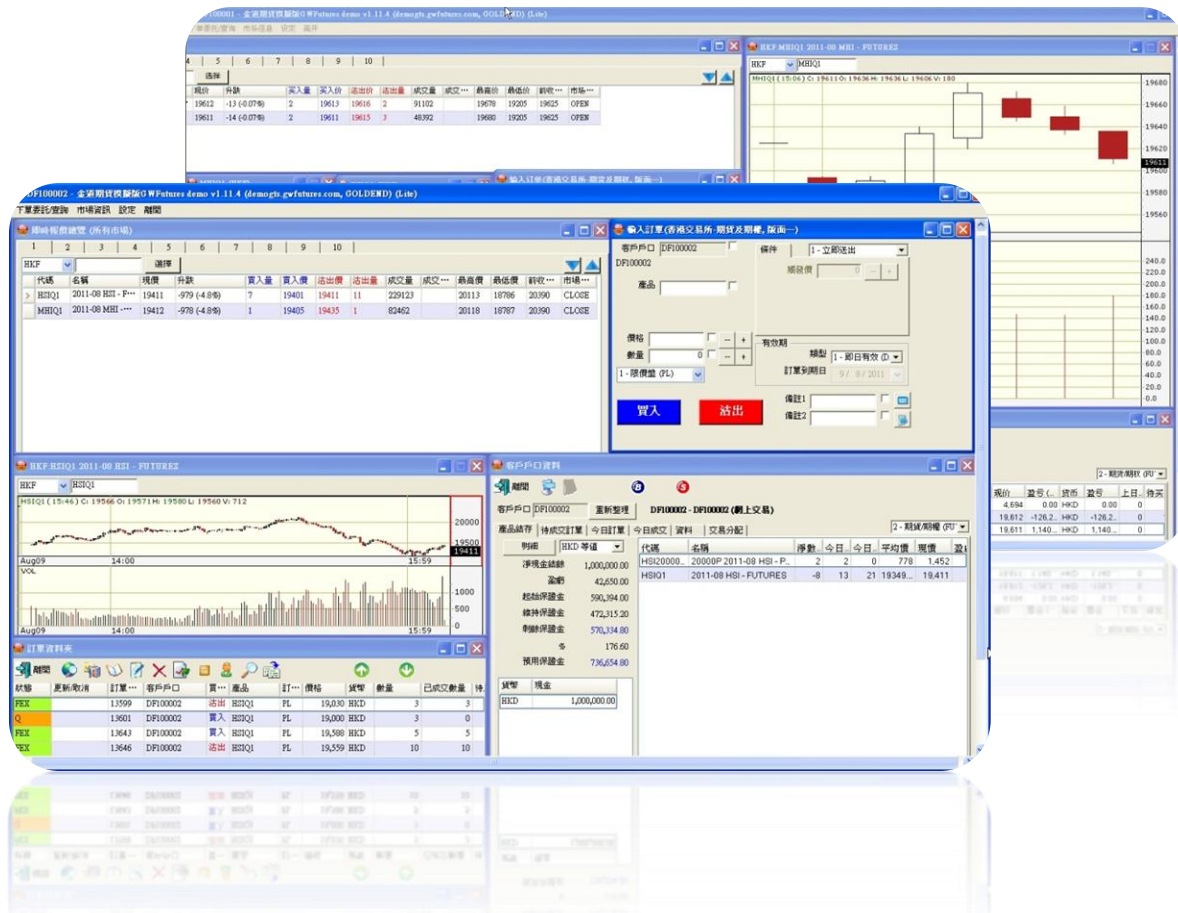


金道投資  
[www.gwtrade.hk](http://www.gwtrade.hk)  
金道集團成員 Member of Goldenway Group

n Z ,

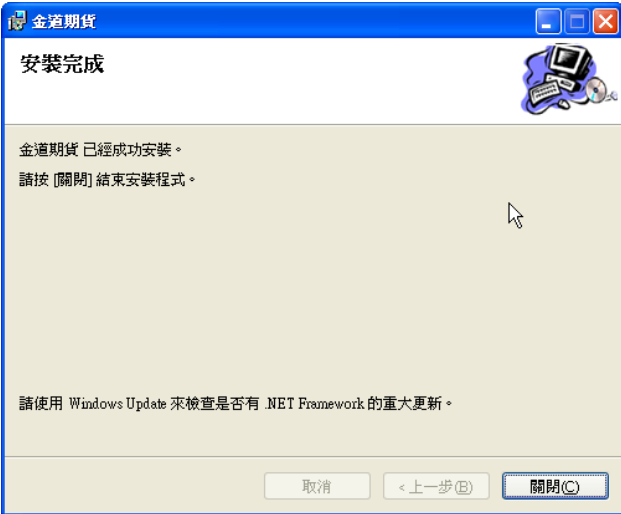
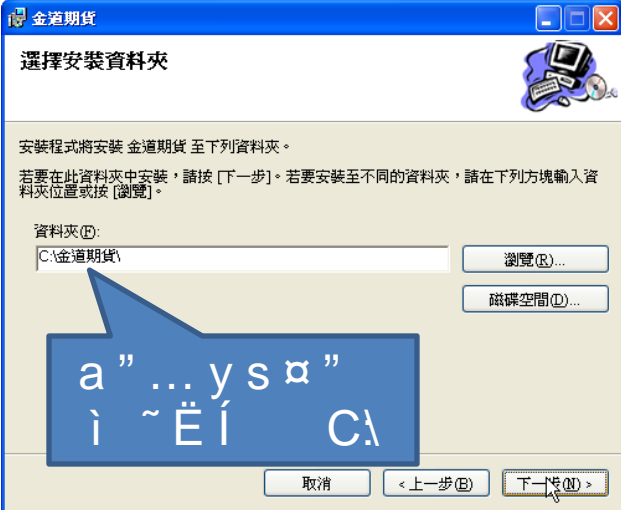
# Ì G â

1. œ Ø
2. Æ 5 a
3. á •
4. @ â ± α
5. • â / ¶ â
6. \$ î z



œ Ø

- 1
  - î c @ n Z,, " r
  - " GWfutrues big5.msi Ð ^
  - é œ Ø -
- 2:
  - ‘ 按 ? » [ @ + j ] ð ” • ñ
  - ~ > Y « œ Ø -



Æ 5 a

i 3

Ó - ' M

c » Æ 5 1 4 a " ì c [ Ó - ' M ] " 2 " ) È !

Æ 5 a

A 5 [ 4 a Ö ~ ] ( F + 7 ! ì a Æ ~ ) — [ 4 a / ~ ] " G — [ • â ] " ¥ õ [ Æ 5 ]



Ó - ' M

á •

i 4

- 4<sup>a</sup> 登入 õ ” • Ž ) C { ÿ -<sup>1</sup> @ ñ Đ \_ à ó » ï  
 œ x Q U [ — ® — U [ ” ¥ õ ‡ [ { s ] @ [ • ~ Ë ÿ  
 { s ] ” Đ § U<sup>1</sup> @ p ! 3 Ë ÿ { œ ” ± • @ » 7 4 -

### 金道期貨預設版面

設定 離開

- 時鐘
- 螢幕鎖
- 載入桌面設定
- 儲存桌面設定
- 清除桌面設定
- 顯示今日消息

The screenshot displays the Gold Trade Futures software interface. It includes a market data table, an order entry window, and an account information window. The market data table shows columns for HKFP, 代碼, 名稱, 現價, 升跌, 買入量, 買入價, 沽出價, 沽出量, 成交量, 成交, 最高價, 最低價, 前收, and 市場. The order entry window shows fields for 客戶戶口, 產品, 價格, 數量, and 有效期. The account information window shows a table of 代碼, 名稱, 淨數, 今日, 昨日, 平均價, 現價, 盈虧, 貨幣, 盈虧, 上日, and 待買.

Ps ” ‘  
ô Ý 4 }

ay d

@ â ÷ ±

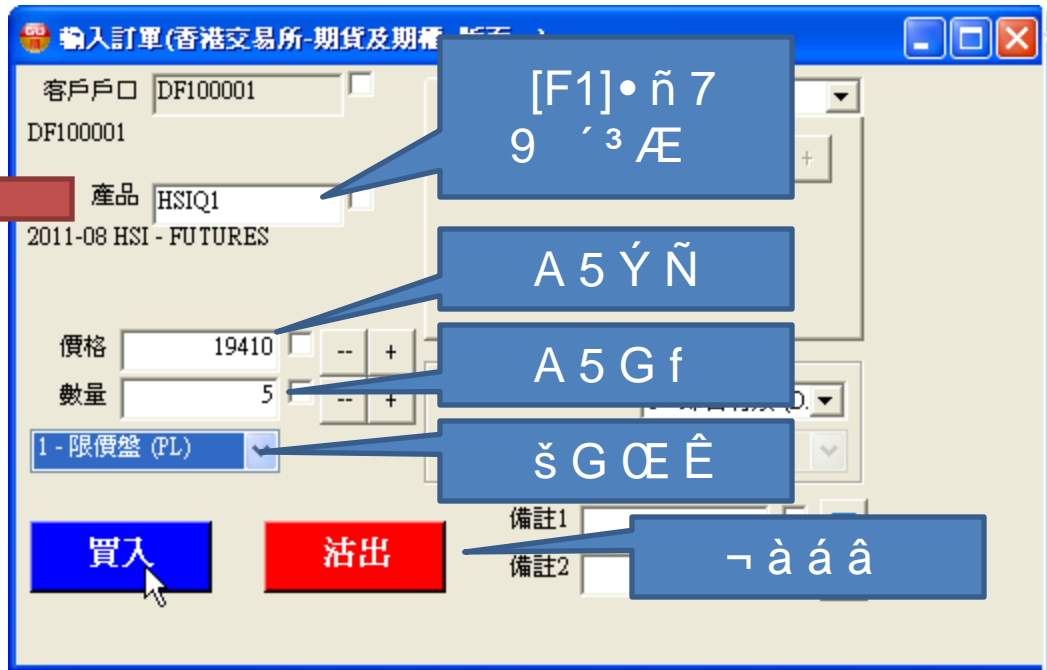
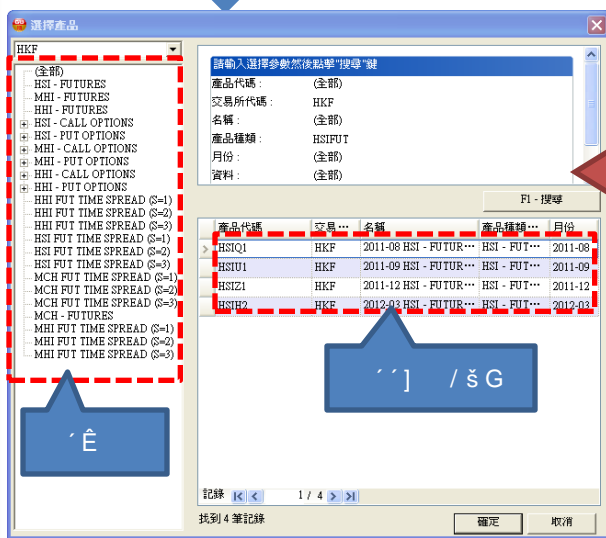
@ â x Q

” ‘ a Q ÷ ±



@ â ± x

- 在下方的[A 5 á â ] . x m , G - [ ' ] , A 入 [ Ý Ñ ]、 [ G f ] 及 [ Œ Ê ] 即可 [ G 5 ]、 [ ÿ à ] - à á â 。



• â / ¶ â

i 6

- " « L 1 á â } 可在[ á â ÷ ± H ]内 [ “ • á â ] Ð “
- [ Ý Ñ ]、[ G f ]或[ 7 ã á â ]–

The screenshot shows a trading software window titled "更改訂單" (Modify Order). It contains a table of order details and a form for editing. Callouts point to various elements:

- á â # a**: Points to the order status "NEW - 等待中".
- % • Ý Ñ**: Points to the "更改訂單 (F5)" button in the toolbar.
- % • G f**: Points to the "新價格" (New Price) input field.
- 7 ã á â**: Points to the "取消訂單" (Cancel Order) button.
- ~ % •**: Points to the "更改訂單 (F5)" button in the bottom right.

Other callouts include:

- š G % • ^ > õ " f [ “ • á â ]**: Points to the "更改訂單 (F5)" button in the toolbar.



\$ î z

- • ¶ 2” î Í D † ´ t V Ü Ú \$ î :
- ± µ Ü Ú
- (852) 3719-9733 (香港)
- 400088061336 (國內)
- “ ð = a ± α Ç ¬ ) [cs@gwtrade.hk](mailto:cs@gwtrade.hk)